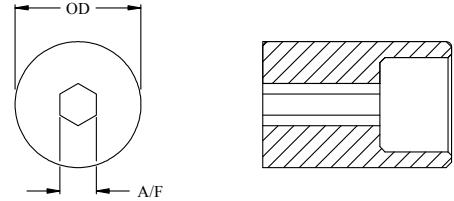


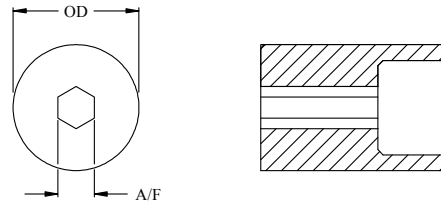
**Inch**

Screw Size	Part Number	Hex A/F	A/F inch/mm	OD inch/mm	Length inch/mm
2, 3	HI-1/8	1/8	.121/3.07	.552/14.02	.750/19.05
4, 5	HI-3/16	3/16	.182/4.62	.552/14.02	.750/19.05
4, 5	HI-3/16-1	3/16	.182/4.62	.740/18.80	.750/19.05
6, 8	HI-1/4	1/4	.245/6.22	.552/14.02	.750/19.05
6, 8	HI-1/4-1	1/4	.245/6.22	.740/18.80	.750/19.05
10, 12	HI-5/16	5/16	.306/7.77	.740/18.80	.750/19.05
10, 12	HI-5/16-1	5/16	.306/7.77	.552/14.02	.750/19.05
1/4	HI-3/8	3/8	.368/9.35	.990/25.15	1.000/25.40
1/4	HI-3/8-1	3/8	.368/9.35	.740/18.80	.750/19.05
1/4	HI-7/16	7/16	.429/10.90	.990/25.15	1.000/25.40
5/16	HI-1/2	1/2	.492/12.50	.990/25.15	1.000/25.40
5/16	HI-1/2-1	1/2	.492/12.50	1.240/31.50	1.000/25.40
3/8	HI-9/16	9/16	.553/14.05	1.240/31.50	1.000/25.40



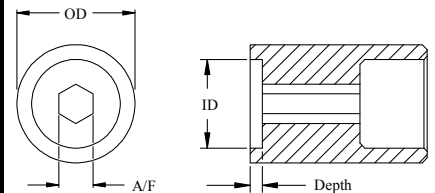
**Metric**

Screw Size	Part Number	A/F inch/mm	OD inch/mm	Length inch/mm
4	MHI-4	.153/3.89	.552/14.02	.750/19.05
5	MHI-5	.191/4.85	.552/14.02	.750/19.05
5.5	MHI-5.5	.211/5.36	.552/14.02	.750/19.05
6	MHI-6	.213/5.87	.552/14.02	.750/19.05
7	MHI-7	.269/6.83	.740/18.80	.750/19.05
7	MHI-7-1	.269/6.83	.552/14.02	.750/19.05
8	MHI-8	.309/7.85	.740/18.80	.750/19.05
10	MHI-10	.387/9.83	.740/18.80	.750/19.05
10	MHI-10-1	.387/9.83	.990/25.15	1.000/25.40
12	MHI-12	.465/11.81	.990/25.15	1.000/25.40
13	MHI-13	.504/12.80	.990/25.15	1.000/25.40
13	MHI-13-1	.504/12.80	1.240/31.50	1.000/25.40
15	MHI-15	.583/14.80	1.240/31.50	1.000/25.40



**Confined Head**

Screw Size	Part Number	Hex A/F	A/F inch/mm	OD inch/mm	Length inch/mm	ID inch/mm	Depth inch/mm
4	CHI-3/16	3/16	.182/4.62	.552/14.02	.750/19.05	.234/5.94	.009/.229
5	CHI-3/16-1	3/16	.182/4.62	.740/18.80	.750/19.05	.250/6.35	.013/.330
6	CHI-1/4	1/4	.245/6.22	.552/14.02	.750/19.05	.315/8.00	.016/.406
6	CHI-1/4-1	1/4	.245/6.22	.740/18.80	.750/19.05	.315/8.00	.013/.330
8	CHI-1/4-2	1/4	.245/6.22	.552/14.02	.750/19.05	.315/8.00	.017/.432
8	CHI-1/4-3	1/4	.245/6.22	.740/18.80	.750/19.05	.315/8.00	.017/.432
10	CHI-5/16	5/16	.306/7.77	.740/18.80	.750/19.05	.400/10.16	.017/.432
10	CHI-5/16-1	5/16	.306/7.77	.552/14.02	.750/19.05	.400/10.16	.017/.432
12	CHI-5/16-2	5/16	.306/7.77	.740/18.80	.750/19.05	.415/10.54	.020/.508
1/4	CHI-3/8	3/8	.368/9.35	.990/25.15	1.00/25.40	.500/12.70	.028/.711
1/3	CHI-1/2	1/2	.492/12.50	.990/25.15	1.00/25.40	.650/16.51	.030/.762
1/3	CHI-1/2-1	1/2	.492/12.50	1.240/31.50	1.00/25.40	.650/16.51	.030/.762
3/8	CHI-9/16	5/16	.554/14.07	1.240/31.50	1.00/25.40	.750/19.05	.032/.813



1. M2 Material at 59-61RC
2. Special materials available upon request